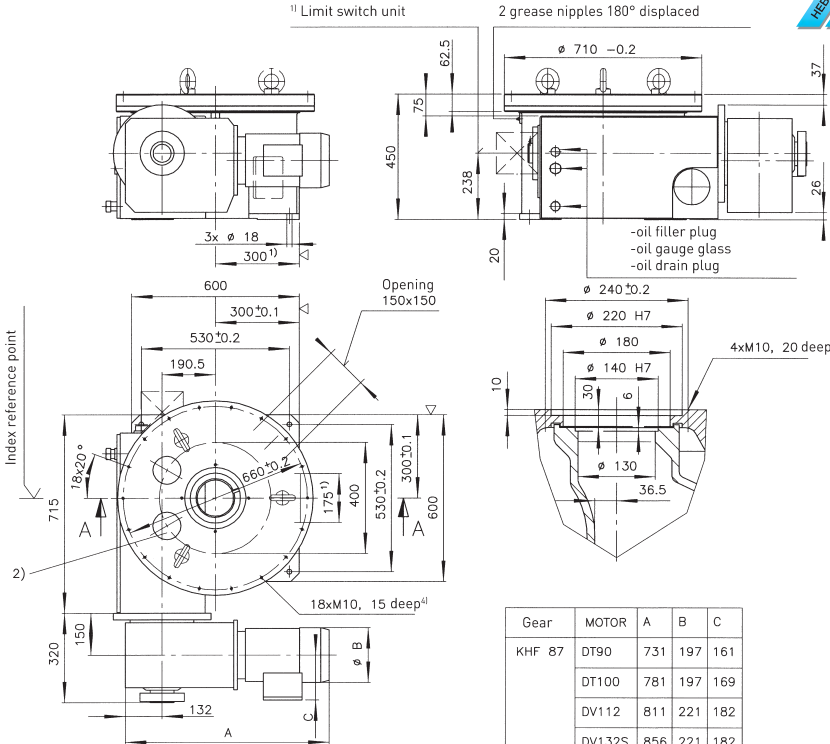


Precision index drives for rotary motions



Gear	MOTOR	A	B	C
KHF 87	DT90	731	197	161
	DT100	781	197	169
	DV112	811	221	182
	DV132S	856	221	182
	DV132M	908	275	230

For transportation of the turntable with eyebolts, 3 tapped holes M24x40 deep have been arranged on $\varnothing 460$.

¹⁾ For the dimensions of limit switch units, accessories or special design, please ask for a separate drawing.

²⁾ Screwing surface 175x195.

⁴⁾ Standard fixing hole pattern. Special hole pattern at extra price on request.

²⁾ Location of the cam followers at the index reference point
[Free areas must be provided accordingly in the tool plate]

2/3/6 Indexing steps
6 cam followers

4/8 Indexing steps
8 cam followers

5/10 Indexing steps
10 cam followers



Technical data

Static bearing capacity of table plate bearing
(theoretic factors of the bearing manufacturer)

$C_{OA} = 630000 \text{ N}$

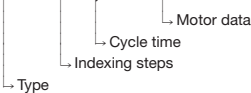
$C_{OR} = 296000 \text{ N}$

$C_{OM} = 89000 \text{ Nm}$

Permissible resulting tangential moment, due to process related forces incurred while the table plate is at standstill: $M_t = 4400 \text{ Nm}$

Order example:

EDA710 4 2,5 400 V - 50 Hz



Indexing steps

Standard indexing steps: 2,3,4,5,6,8,10
further indexing steps on request

Tool plate

Mounting of tool plate see drwg.

Accuracy

order: ± 36 angular seconds

Total weight

High-precision performance upon request
approx. 710-730 kg (depending on size of motor)
C-flange motor acc. to requirements

Motor

Remark

This type range permits the construction of special models with different technical data. In order to prepare a detailed offer, we would need exact technical information.